

TICKNER BELL YOUNG & LEBENSON

GALLERY 46

# *‘A Corporeal God’*

A survey of PAINTING and PHOTOGRAPHY

*by* THOMAS D WRIGHT

*at* GALLERY46

22 MAY - 1 JUNE 2025

## CATALOGUE

*All enquiries contact*

Martin J Tickner

[mj.tickner@gallery46.co.uk](mailto:mj.tickner@gallery46.co.uk)

+44 (0)7909 947 912

[@gallery46whitechapel](https://www.instagram.com/gallery46whitechapel)

[www.gallery46.co.uk](http://www.gallery46.co.uk)

“INSPIRING, LIFE AFFIRMING  
it transcends the human, to a  
spiritual disorientation that  
*grabs you full throttle* into the REAL.  
*A transcendence of inspiration.*”



'Theatres', 2023  
Oil on linen  
*140 x 140 x 5 cm*  
£5,000



'Stagger face', 2025

Oil on canvas

100 x 70 x 3.5 cm



Sold



'Ruby slipper', 2023

Ultra hd print on aluminum, matte

28 x 42 cm

Black aluminum tray frame

3 x 1 cm

*Edition 10 / 1 AP*

£500



'A study of Compassion', 2024

Oil on canvas

150 x 120 x 3 cm



Sold



'Thought I felt', 2023

Oil on wooden panel

82 x 82 cm

*Gold Black frame*

5 x 7 cm

£2,000



'Peter', 2021  
Acrylic on wooden panel  
60 x 90 cm  
£5,000



'Prime Cut', 2023

Ultra hd print on aluminum, matte

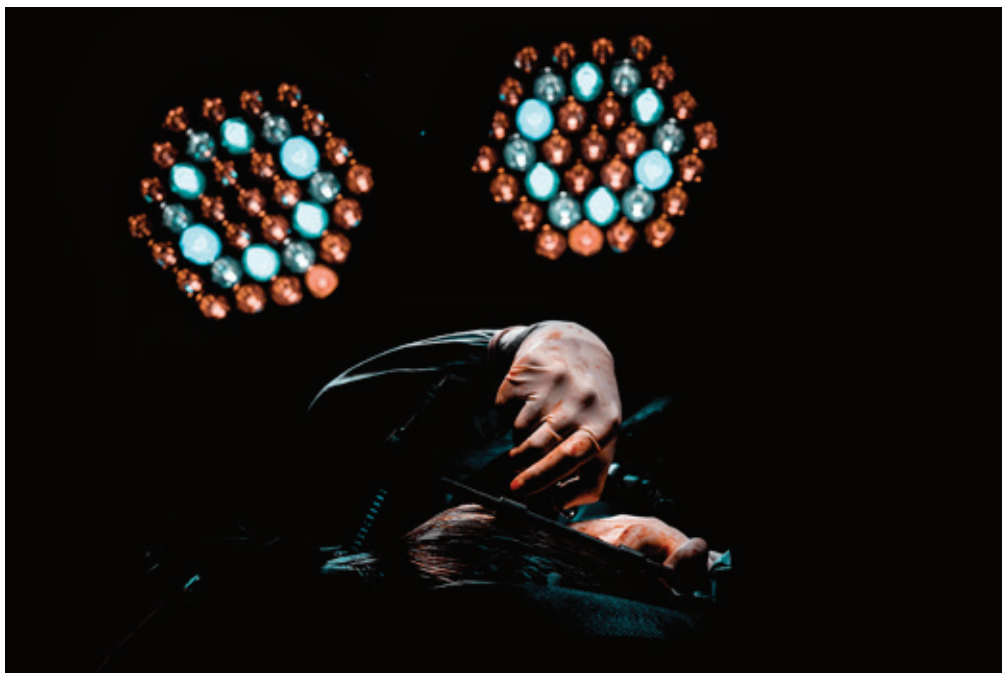
*60 x 40 cm*

Black aluminum tray frame

*3 x 1 cm*

*Edition 10 / 1 AP*

**£700**



'Bypass #8', 2023

Ultra hd print on aluminum, matte

42 x 28 cm

Black aluminum tray frame

3 x 1 cm

*Edition 10 / 1 AP*

£500



**'Cauterizer', 2023**

Ultra hd print on aluminum, matte

*42 x 28 cm*

Black aluminum tray frame

*3 x 1 cm*

*Edition 10 / 1 AP*

**£500**



'Closure', 2023

Ultra hd print on aluminum, matte

60 x 40 cm

Black aluminum tray frame

3 x 1 cm

Edition 10 / 1 AP

£700



'Steel and Teal', 2023

Ultra hd print on aluminum, matte

42 x 28 cm

Black aluminum tray frame

3 x 1 cm

*Edition 10 / 1 AP*

£500



'The Scene', 2023

Ultra hd print on aluminum, matte

60 x 40 cm

Black aluminum tray frame

3 x 1 cm

Edition 10 / 1 AP

£700



'5 Swabs', 2023

Ultra hd print on aluminum, matte

60 x 40 cm

Black aluminum tray frame

3 x 1 cm

Edition 10 / 1 AP

£700



'Take the stage', 2023

Ultra hd print on aluminum, matte

*100 x 66 cm*

Black aluminum tray frame

*3 x 1 cm*

*Edition 10 / 1 AP*

**£1,750**



**'Between Flesh and Light', 2023**

Ultra hd print on aluminum, matte

*100 x 66 cm*

Black aluminum tray frame

*3 x 1 cm*

*Edition 10 / 1 AP*

**£1,750**



'The Prayer Blade', 2023  
Ultra hd print on aluminum, matte  
*100 x 66 cm*  
Black aluminum tray frame  
*3 x 1 cm*  
*Edition 10 / 1 AP*  
**£1,750**



'5 divine blades', 2023

Ultra hd print on aluminum, matte

*120 x 50 cm*

Black aluminum tray frame

*3 x 1 cm*

*Edition 10 / 1 AP*

**£1,750**



'Confession', 2020  
Acrylic on linen  
120 x 140 cm  
Gold and black frame  
6 x 9 cm



Sold



'Anatomy study #1', 2023

Oil on wooden panel

40 x 40 cm

Black wood ash tray frame

3.5 x 1 cm

£1,500



'Anatomy study #7', 2023

Oil on wooden panel

40 x 40 cm

Black wood ash tray frame

3.5 x 1 cm



Sold



'Peeled Anatomy', 2022

Oil on wooden panel

60 x 60 cm

Gold frame

7 x 4 cm

£2,500



'Anatomy study #8', 2023

Oil on wooden panel

*40 x 40 cm*

Black wood ash tray frame

*3.5 x 1 cm*

£1,500



'A Skin of Borrowed Bones', 2025

Oil on wooden panel

*50 x 50 cm*

Black wood ash tray frame

*3.5 x 1 cm*

£2,000



'Theatre Noir', 2024  
Oil on canvas  
*120 x 150 x 2.5 cm*  
£7,500



'Lungs Up', 2025

Oil on linen

80 x 80 cm

Black wood ash tray frame

3.5 x 1 cm

£2,000



Sold



'Red Harvest', 2023

Oil on canvas

124 x 152 cm

Black wood ash tray frame

3.5 x 1 cm

£7,500



'27 Bones, A dance with steel', 2023  
Oil on linen  
*120 x 150 x 3 cm*  
£7,500



'Of Flesh and bone', 2024

Oil on wooden panel

*80 x 80 cm*

Black wood ash tray frame

*3.5 x 1 cm*

**£4,000**



'Retract That', 2023  
Oil on linen  
*150 x 120 x 3 cm*  
£7,500



'Retract the Sternum', 2023

Oil on linen

(diptych)

240 x 150 x 3 cm

£15,000



'A Glance over Flesh and steel', 2023

Oil on linen

90 x 120 cm

Black wood ash tray frame

3.5 x 1 cm



Sold

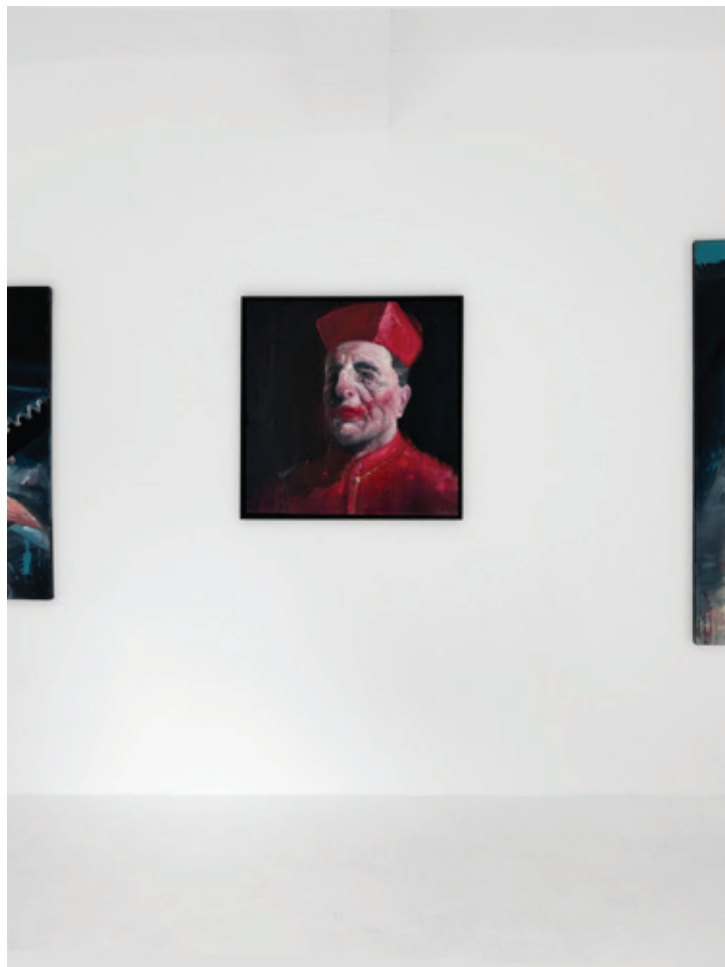
TICKNER BELL YOUNG & LEBENSON  
GALLERY 46



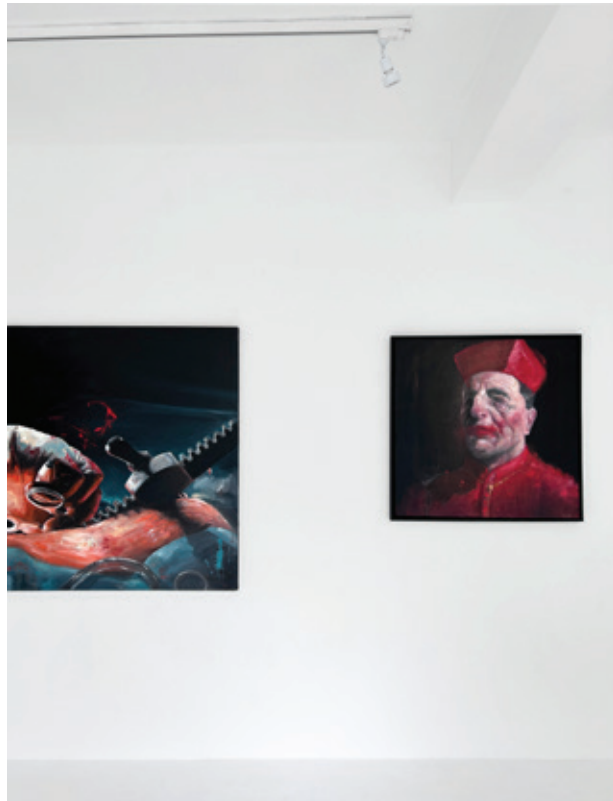
TICKNER BELL YOUNG & LEBENSON  
GALLERY 46



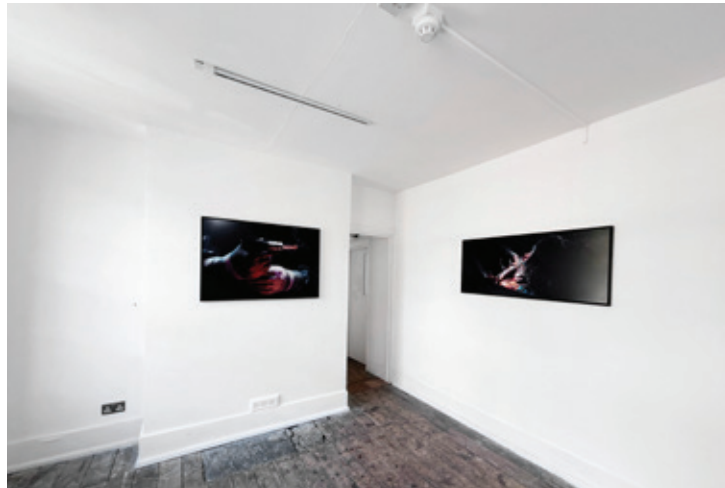
TICKNER BELL YOUNG & LEBENSON  
GALLERY 46



TICKNER BELL YOUNG & LEBENSON  
GALLERY 46



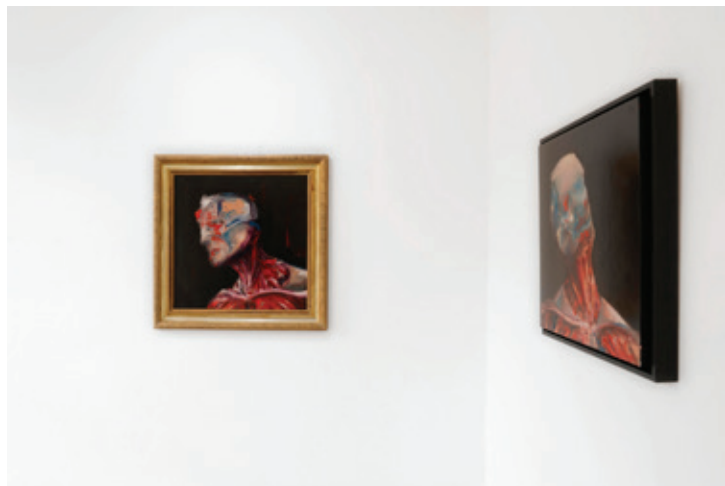
TICKNER BELL YOUNG & LEBENSON  
GALLERY 46



TICKNER BELL YOUNG & LEBENSON  
GALLERY 46



TICKNER BELL YOUNG & LEBENSON  
GALLERY 46



# THOMAS D WRIGHT

## ‘A Corporeal God’

Between tenderness and brutality, capturing both the technical grace of the human hand and the raw physicality of the body laid bare.

**“In a world increasingly mediated by screens and disembodied experience, these works bring us abruptly, almost rudely, back into the body,”** notes Artistic Director/Curator Martin J Tickner. **“There is awe here, and revulsion. It is a confrontation with the vulnerable materiality we all share.”**

Through Wright’s lens and brush alike, the clinical space becomes a stage where life, death, and intervention meet in a strange and compelling ballet. The images oscillate between tenderness and brutality, capturing both the technical grace of the human hand and the raw physicality of the body opened and laid bare.

There is a particular kind of stillness that exists within the violence of precision. In ‘A Corporeal God’, Thomas D Wright’s forthcoming solo exhibition at GALLERY46, the artist turns his unflinching eye toward the operating theatre — rendering, in large-scale paintings and haunting photographic works, a visceral meditation on the choreography of surgery.

Wright, whose background straddles both the aesthetic and the anatomical, approaches his subject matter with neither sensationalism nor sentimentality. Instead, he constructs a visual language that is at once documentary and painterly — pulling from traditions of medical illustration, classical figuration, and contemporary realism. The photographs are uncomfortably intimate; the paintings, monumental and immersive, draw the viewer into the stark ritualism of clinical procedure.

‘A Corporeal God’ continues GALLERY46’s commitment to presenting challenging and conceptually rigorous contemporary practice. Occupying two floors of the East London townhouse gallery, the exhibition offers a rare and compelling insight into the theatre of modern medicine — one where aesthetics and ethics meet under surgical light.

## GALLERY 46

## THOMAS D WRIGHT

It is with an inbuilt fascination of medical imagery that Thomas D Wright's practice revolves around, the historic and symbiotic relationship between art and medicine. His research has led him to St. Bartholomew's hospital, London where he attends cardiac surgeries, documenting the experiences through photography and sound, capturing the profound intensity of the operating theatre, which he translates into paintings that blend both qualitative and quantitative observations.

The visual language draws inspiration from a lifelong passion for the baroque, the opulent beauty of the Renaissance, and the limitless realms of surrealism. His work explores themes of the temporality, and fragility of life, self-destruction and rebirth. Blending this his own contemporary insights and life encounters, to create a distinctive and unique artistic style.

His work primarily in oils, blending bold expressive mark making with pockets of graphic detail, playing with both sympathetic and parasympathetic imagery. He considers the works, both photographs and paintings, to resemble abstract poetry that creates thought provoking possibilities.

—

Emerging from the underground creative scene, RCA MA Painting graduate Thomas D Wright creates emotionally charged work that reflects a world shaped by personal experience and raw introspection. With a background spanning tattooing, rave DJ and producer, Wright delves into themes of medicine, addiction, self-destruction, and rebirth, weaving these with a long-standing fascination for surgical imagery.

As an observer of cardiac surgeries at St. Bartholomew's Hospital in London, he merges clinical reality with painterly invention, producing bold, visceral oil paintings finding the beauty in the grotesque. Heavily influenced by the essence of baroque religious painting, Francis Bacon and Andreas Gursky, Wright's unique history and approach gives you images that speak to the body as well as the mind.